



LARKHALL ATHLETIC YOUTH FC



www.layfc.org.uk

LAYFC purpose: *“Our club exists to enable children to play football in a safe, enjoyable and encouraging way”*

INFORMATION SHEET – Season 2007-2008

Volunteers

We want to give more children the opportunity to play football with us in 07-08. However, we cannot create new teams without new volunteers coming forward. Therefore, **please** consider what **YOU** can do to help. This can include helping with administrative or organisational tasks (see roles on next page) or helping with coaching. You don't have to be an “expert” to volunteer and it can be really rewarding, working for the good of the children and alongside other volunteers who are very supportive of each other. If you would like to volunteer to help build our club for the benefit of all the children, or would like further information, please talk to Tony Day, Richard Stone or register your interest via the Contact Us page on the club website (www.layfc.org.uk), which also has details of what volunteer roles involve. Thank you.

What we believe in and stand for

We feel it is important for a club to be clear about what it stands for and what behaviour is expected of its players, parents/carers, coaches and other volunteers. Our club's purpose, beliefs and values are attached at Annex and are summarized by our PRIDE badge, which, together with our new club badge (see top left), will appear on all our shirts next season. The club's beliefs and values are backed up by clear, positive codes of conduct that we expect all of our players, parents/carers, coaches and volunteers to abide by.

Teams

In season 06-07, we ran 9 teams: U8, U9, U10 (2 teams), U11 (2 teams), U13 (2 teams) and U14. For 07-08, we have created some extra teams. We now have 13 teams in total: two teams at each of U8, U9, U10, U11 and U12 as well as one team at each of U14 and U15 levels, and one U12 Girls team. Most of our teams play in the Mid Wilts Youth League, alongside teams from Melksham, Corsham, Trowbridge, Devizes, Chippenham, etc.

Girls' football

The club is delighted to have formed its first all-girl team at U12 level and is keen to recruit more girls to play at U10 and U14 age groups.

Where and when we play

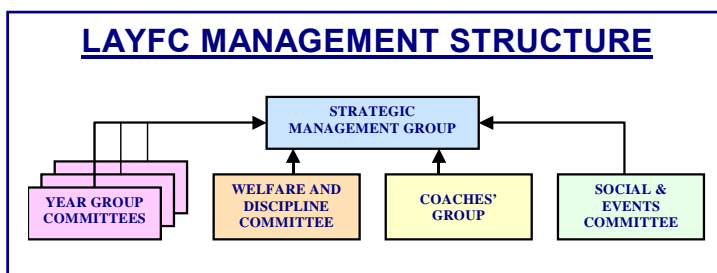
For season 07-08, our teams will play their home matches at various venues around Bath: the U8s, U10s and U14s will play at Kingswood School's Upper Playing Fields at Lansdown, Bath. Our U11s play their home games at Monkton Combe School, while the U9s, U12s, U12s Girls and the U15s all play their home games the Royal High School on Lansdown Road. The different teams play on Saturday or Sunday as follows: U8s - home games Sunday afternoon, away games on Saturday or Sunday (according to the other team's pitch availability); U9s – usually Saturday afternoons; U10s – usually Sunday afternoons; U11s – usually Saturday mornings; U12s – usually Sunday mornings; U12 Girls – home games Saturday afternoons, away games normally Saturday mornings; U14s and U15s – Sunday afternoons. Teams typically play between 12 and 20 games (depending on the size of their Division and the length of any cup run).

Where and when we train

During the lighter evenings (between August and late September), all year groups train outdoors on Wednesday evenings at Lansdown Playing Fields (next to the Lansdown Park and Ride). From late September until the lighter nights return, our teams at U10 level and older move to train on floodlit astros at Kingswood School (mostly on a Thursday evening). Our U8s and U9s teams and the U12 Girls move indoors to the sportshalls at Ralph Allen and Kingswood Schools respectively, still on a Wednesday evening. We keep under review the facilities we use and some changes are inevitable from season to season.

How we are organised

As our club has grown, it has become increasingly important to have a well-organised management structure, with specific roles within each year group, as well as certain roles (e.g. child welfare officer) that span the club as a whole. This structure is summarised in the diagrams. The roles of the Strategic Management Group are to discuss and set policies for the club as a whole, as well as facilitating the coordination and cooperation between year groups whenever appropriate, while allowing year groups freedom to manage their own affairs.



Strategic Management Group

ROLE	ALL AGES
Chairperson	
Vice/Co Chairperson	
Club Secretary	
Child Welfare Officer	
Sponsorship & Fundraising	
Schools Liaison	
Coaching Development	
Finance and Purchasing	
Senior Club Rep	
Newsletter Editor	
Webmaster	

← Year Group Committees →

ROLE	U8	U9	U10	U11	U12	U13	U14
Year Group Leader							
Year Group Secretary							
Membership Secretary							
Treasurer							
Fixture Secretary							
Coach 1							
Coach 2							
Social Secretary							

Football Association good practice

Our club is run and organised in accordance with FA good practice. This means that we adopt the relevant FA recommended policies and procedures (e.g. child welfare and equal opportunities). The majority of our coaches are qualified to FA Level 1 or Level 2.

Membership subscription

The membership subscription for 07-08 is £90 per player (may be a little less for the youngest age groups and the all-girl teams who are likely to play fewer matches). This covers the cost of all weekly training sessions (between 30-35 sessions per year) and all matches (typically around 16 per season). This then works out at around £2 per "event", which we feel represents good value for money. The subscription does not cover the cost of kit (see below), social events (see below) or summer tournaments, which our teams enter (these normally cost around £4 per player, per tournament, with teams usually entering 3 or 4.)

Kit

For 07-08, all but our U14s teams are changing to a common kit (which is royal blue, with white accents). A kit of shirt, shorts and socks costs £26-50 for smaller children, while the cost for larger sizes will be £31. However, every 2 years the club will provide each player with a voucher worth 50% towards the cost of kit, which will be stocked by John Moores' Just Rugby store in Bath (High Street, just along from JJB).

Social events

The club organises a range of social activities, including trips to top-quality football matches. In the past, these activities have included: cinema trips, Christmas parties, swimming parties, as well as trips to Old Trafford,

Highbury, The Emirates Stadium and Southampton FC. The cost of these trips is not included in the annual membership subscription.



WHAT REALLY MATTERS IN OUR CLUB?



OUR PURPOSE

Our club exists to enable children to play and enjoy football in a safe, enjoyable and encouraging way.

OUR BELIEFS

Our club is run according to these core beliefs, which are reflected in codes of conduct:

- ▶ Irrespective of their current ability or potential, the enjoyment and development of each child is equally important as every other
- ▶ In every match, individuals and teams should always try hard to win. However, always trying your best and trying hard to learn and improve are more important than winning
- ▶ Good sportsmanship and good teamwork - on and off the pitch - are vital to the club's development and to the development of appropriate social values in children
- ▶ Positive encouragement is the way to help children build their self-esteem and improve
- ▶ Parents and other adults associated with our club have a vital responsibility to always set the best possible examples of behaviour to the children

OUR VALUES

LAYFC believes in playing football with Passion, Respect, Involvement, Determination and Enjoyment. In short, we believe in playing football with PRIDE !

P ASSION	<ul style="list-style-type: none">▶ For the game▶ For learning and improving
R ESPECT	<ul style="list-style-type: none">▶ For the game▶ For yourself▶ For your team-mates and colleagues▶ For the other team and their supporters▶ For the referee and officials▶ For our club, its values and all its members▶ For different ideas and opinions
I NVOLVEMENT	<ul style="list-style-type: none">▶ Football is for everyone regardless of ability▶ The club depends on all parents/carers "doing their bit" to help▶ We all have something valuable to give to the club
D ETERMINATION	<ul style="list-style-type: none">▶ To be the best you can be▶ To always try your best▶ To keep going when the going gets tough
E NJOYMENT	<ul style="list-style-type: none">▶ Enjoy your efforts as well as your achievements▶ Enjoy knowing you tried your best even when you don't win